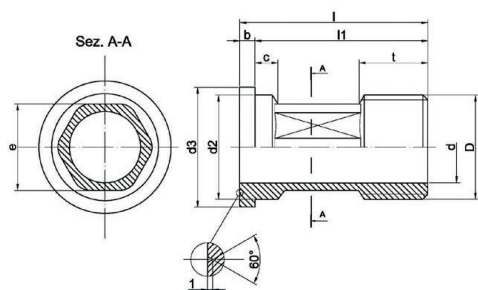




## mod. **RAC**

Set di raccordi per contatori d'acqua  
*Set of connectors for water meters*

### CANNOTTI - TAILPIECES PN16



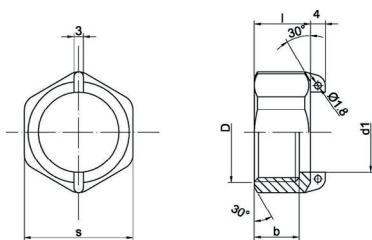
DN	D	t	d	d2	d3	b	l1	l	e	c	Peso (g) Weight
15	½"	13,5	14	20,5	23,5	3	34	37	17	4,5	40
20	¾"	17	20	26	30	3	43	46	23	4	60
25	1"	18,5	25,5	32,5	38	3,5	42,5	46	30	3	110
32	1 ¼"	21	33	41,7	44	4	52	56	37	4	180
40	1 ½"	23	38,5	47,6	55	5	61	66	44	6	280
50	2"	29	50	59,4	70,5	7	69	76	55	16	430

Tutte le misure sono in mm  
*All the measures are in mm*

Materiale: Ottone CW617N  
*Material: Brass CW617N*

Filettature ISO228  
*Threads ISO228*

### DADI - NUTS PN16



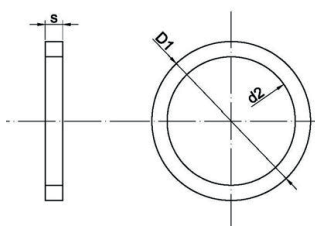
DN	in	D	b	d1	l	s	Peso (g) Weight
15	½"	¾"	12	21,5	15	29	30
20	¾"	1"	14	27	17,5	36	40
25	1"	1 ¼"	17,5	34,3	21,5	46	100
32	1 ¼"	1 ½"	18	42	23	53	130
40	1 ½"	2"	19,5	49	24,5	66	215
50	2"	2 ½"	23	60,5	30	84	450

Tutte le misure sono in mm  
*All the measures are in mm*

Materiale: Ottone CW617N  
*Material: Brass CW617N*

Filettature ISO228  
*Threads ISO228*

### GUARNIZIONI - GASKETS



DN	in	D1	d2	s	Peso (g) Weight
15	½"	24	16	3	0,6
20	¾"	30	20	3	1
25	1"	38	25	3	2
32	1 ¼"	44	33	3	3
40	1 ½"	55	38	3	6
50	2"	70	50	4	10

Tutte le misure sono in mm  
*All the measures are in mm*

Materiale: Gomma EPDM  
*Material: EPDM Rubber*